



**Q.1 A) Choose the correct option and write the answer only.**

**(3)**

- Which of the following is a parasitic plant?  
a) Algae                      b) Cuscuta                      c) Mushroom                      d) Lichen
- The green pigment in leaves essential for photosynthesis is:  
a) Hemoglobin                      b) Iodine                      c) Chlorophyll                      d) Glucose
- The plant that traps and digests insects is:  
a) Cactus                      b) Rose                      c) Pitcher plant                      d) Banyan
- Which of the following statements are correct?  
a) All green plants can prepare their own food.    b) Most animals are autotrophs.  
c) Photosynthesis happens at night.                      d) Oxygen is used up during photosynthesis.
- In ruminants, partially digested food returned to the mouth is called:  
a) Rumen                      b) Cud                      c) Bolus                      d) Feaces
- Which among the following is an insectivorous plant?  
a) Banyan                      b) Pitcher plant                      c) Algae                      d) Mango tree

**B) Fill in the Blanks.**

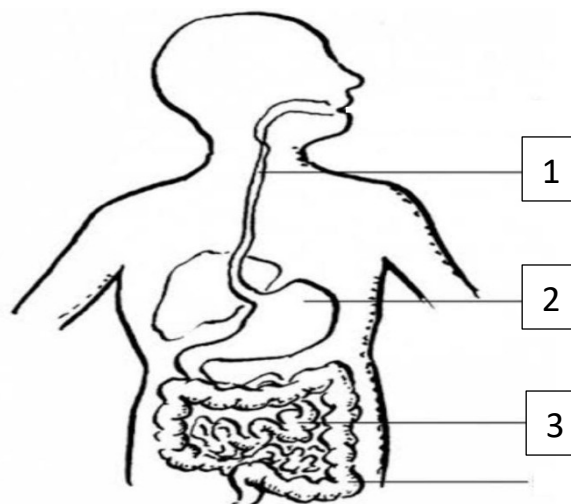
**(2)**

- \_\_\_\_\_ is the process by which plants prepare food using sunlight.
- The largest gland in the human body is the \_\_\_\_\_.
- Amoeba digests its food in the \_\_\_\_\_.
- We obtain nutrients through \_\_\_\_\_.

**C) Answer the following questions in one word –**

**(2)**

- Which part is labelled as 1 and carries food from the mouth to the stomach?
- Which organ labeled in 2 stores and churns food, mixing it with gastric juices?
- Out of 3 and 4, which one is longer?
- Label part 4 in the diagram.



**D) Name the following.****(1)**

1. The pores through which leaves exchange gases
2. Which part of the digestive canal is involved in Chewing of food.

**E) Match column A with the correct option in column B.****(2)**

<b>A</b>	<b>B</b>
1. Protein	a. Stomach
2. Nitrogen	b. Saliva secretion
3. Salivary gland	c. Amino acid
4. Hydrochloric acid	d. Rhizobium
	e. Glucose

**Q.2) A) Answer the following questions in one sentence.****(3)**

1. Riya added a few drops of a chemical to boiled rice and saw the color turn blue-black. Which chemical did she use?
2. What is the function of pseudopodia in amoeba?
3. Which type of nutrition is seen in fungi growing on bread?

**B) Define the following terms and give one example.****(3)**

1. Symbiosis
2. Ruminants

**C) Short Answer Questions.****(4)**

1. State one reason why humans cannot digest cellulose like cattle.
2. A farmer was advised to grow leguminous crops in his field after harvesting wheat. What is the benefit of doing this?

**Q.3) A) Difference between the following (Write one point each):****(2)**

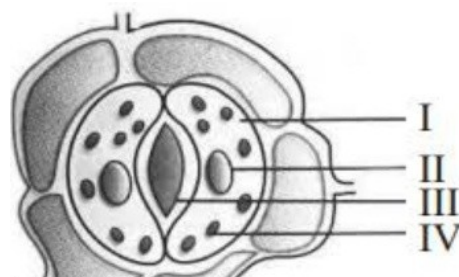
- i. A parasite and A saprotroph
- ii. Small intestine and Large intestine

**B) Long Answer Question:****(3)**

1. Rahul did not water his plant for several days. It began to wilt and die. Explain how photosynthesis helps in the survival of plants and what would happen if it stopped. Draw a neat diagram to support your answer.

**OR**

2. Observe the given diagram of a stomata.
  - a) Identify and label parts I, II, III, and IV.



b) Why are stomata important for photosynthesis.