



**BARODA HIGH SCHOOL, ONGC (Afternoon Shift)**

**Primary Section**

**UT- I Examination : 2025-26**

**Subject:- EVS**

**Name:\_\_\_\_\_ Roll No:-\_\_\_\_\_ Std. : III Div:\_\_\_ Marks: 30**

**Date: 04/08/25 Invg. Sign. \_\_\_\_\_ Examiner's Sign \_\_\_\_\_ Marks  
Obtained\_\_\_/30**

**Q.1 (A) Look at these animals and write whether it is land, air and water animal:**

**(1)**



**(B) Match the animals with their habitat (homes):**

**(2)**

**A**

**B**

1.



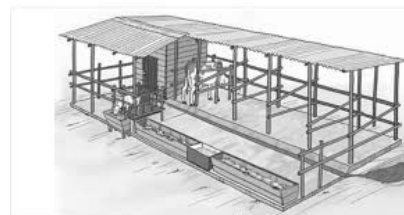
2 .



3.



4.



**(C) See the picture and choose the correct answer:**

**(2)**

1.

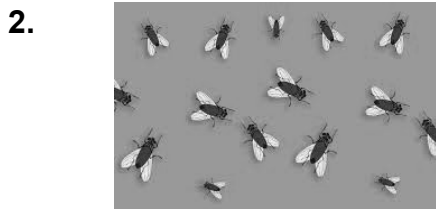


Animal who can -

a) crawl

b) fly

c) walk



Insect who can -  
a) walk  
b) crawl  
c) fly



Animal who can -  
a) fly  
b) hop  
c) walk



Animal who can -  
a) hop  
b) fly  
c) walk

(D) Arrange these objects according to their capacity to store water in smaller to larger order: (2)



(E) Fill in the blanks with the appropriate word: - (trunk, clean, colour, pipe) (2)

1. Leaves of different plants have different shapes, sizes, and \_\_\_\_\_.
2. We should drink only \_\_\_\_\_ water to stay healthy.
3. Chhotu made his house inside a \_\_\_\_\_ for shelter.
4. An elephant drinks water with its \_\_\_\_\_.

(F) Write true or false: (1)

1. Poonam saw animals playing in the classroom. \_\_\_\_\_
2. The plant fairy told the children to run around the tree. \_\_\_\_\_

Q.2 (A) Places in a house (Unscramble the words): (2)

1. ckehtin - \_\_\_\_\_
2. omoathbr - \_\_\_\_\_
3. rmoodbe - \_\_\_\_\_
4. raegdn - \_\_\_\_\_

**(B) Answer in one word:**

**(2)**

1. Which disease is caused by drinking dirty water?

Ans. \_\_\_\_\_

2. Which animal live in our house uninvited?

Ans. \_\_\_\_\_

3. Which plant can be used as a medicine?

Ans. \_\_\_\_\_

4. Which game did the children play in the garden?

Ans. \_\_\_\_\_

**(C) Explanation with one example**

**(2)**

1. What is tree?

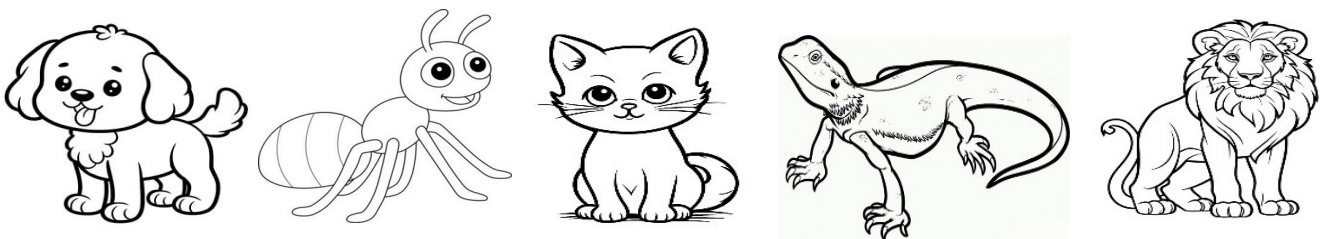
Ans. \_\_\_\_\_

2. What is Climber?

Ans. \_\_\_\_\_

**(D) Colour the picture of the animal that lives in your home:**

**(2)**



**(E) Arrange and rewrite the following activity based on the amount of water that is needed for each of the activities. Begin with the activity that needs the most water:**

**(2)**

To drink	To water the field	To bath	To cook the food	To clean the house	To knead the dough

**Q.3 (A) Observe the picture given in Fig. carefully and write answers for the questions. (2)**

1. Name two animals you see in the picture.

Ans. \_\_\_\_\_

2. What kind of insect is flying near the pond?

Ans \_\_\_\_\_

3. What time of day do you think it is?

Ans. \_\_\_\_\_

4. Name the flower you see in the picture?

Ans. \_\_\_\_\_



**(B) Answer the following questions:**

**(3)**

1. Where do you throw a garbage of your house?

Ans. \_\_\_\_\_

2. For which activity water is needed?

Ans. \_\_\_\_\_

3. Who all live with you in your family?

Ans. \_\_\_\_\_

**(C) Draw a plant with its parts:**

**(5)**

